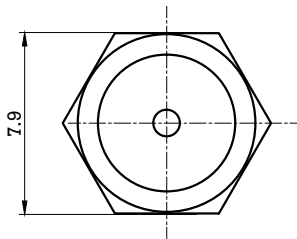


Electrical Specification
 Impedance: 50 ohm
 Frequency Range: DC-18GHz
 VSWR: 1.3: 1 (MAX.)
 Power: 2 Watts
 Working Voltage: 500Vrms
 Dielectric Withstanding Voltage: 1000Vrms
 Insulator Resistance: 5000 Megohms Min.
 Connector: SMA Male



Description	Material	Finish	Part No.	WLT-1118L	18GHz SMA Male 2W Precision RF Load / Termination			
Shell	Brass	Gold	 歲爾特科技有限公司 WALT TECHNOLOGY INC.	DWG NO.	CB050631584	Modification Date		
Gasket	Silicone			Dimension Tolerance	±0.2	Unit	mm	
Body	Brass	Gold		Projection				
Insulator	Teflon			Date	2012/1/15	Version	B	
Center Pin	Brass	Gold						